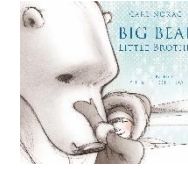


# Eling Infant School Knowledge Organiser: Frozen Planet

## Important People



## Map of the world.



## - Story Synopsis

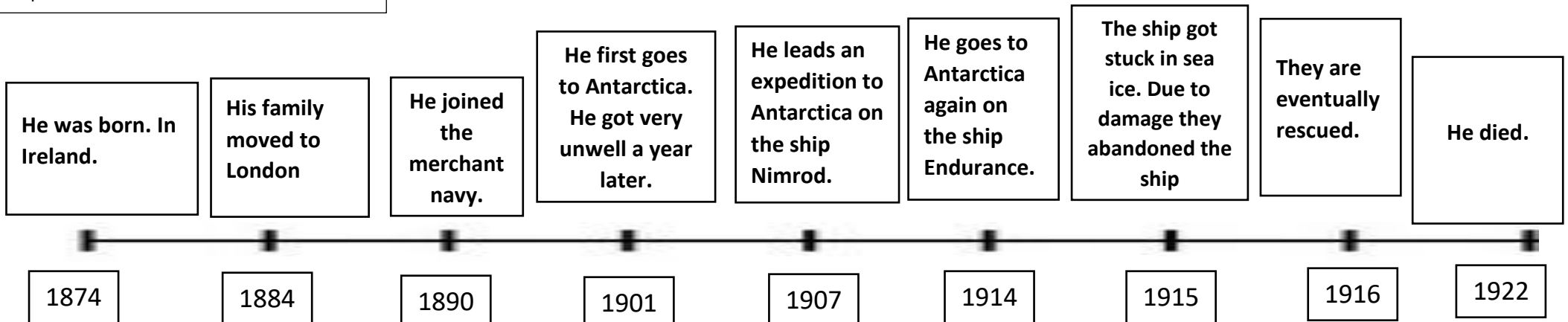
### Big Bear Little Brother

### Ernest Shackleton

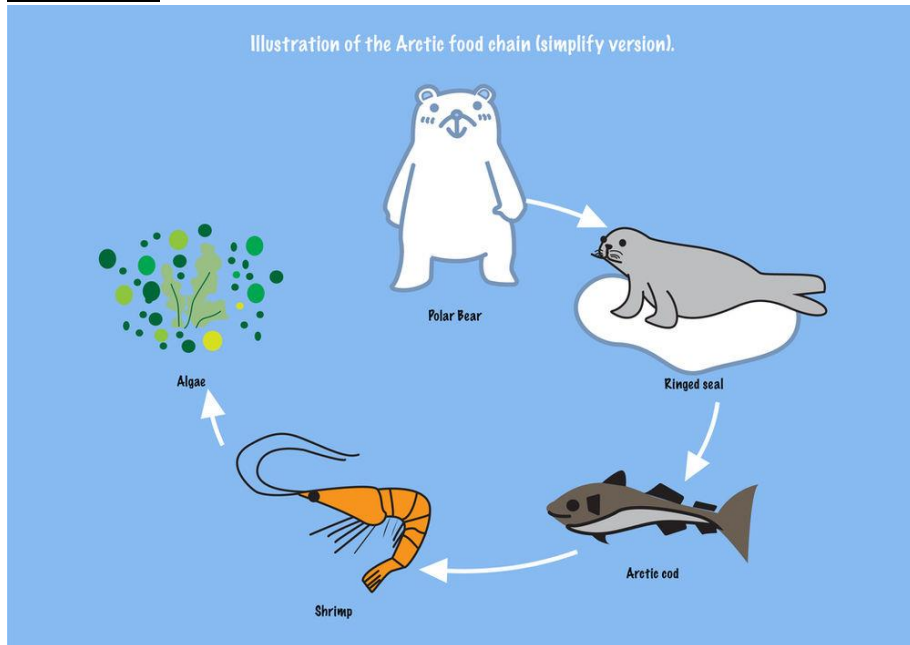
Ernest Shackleton was a polar explorer. He led three British expeditions to the Antarctic. Before he led the three missions, he had already visited the Antarctic, but was sent home as he was ill. In 1912 the Norwegian explorer Roald Amundsen became the leader of the first group to reach the South Pole. Shackleton decided on a new target, he wanted to walk across Antarctica from one side to the other crossing the South Pole in the middle. Disaster struck when his ship, *Endurance*, was trapped in the ice. They spent 281 days on board waiting for the ice to break again, but the boat was slowly crushed to pieces. Shackleton and his men dragged their lifeboats over many miles of snow and ice to reach sea. They set sail in the lifeboats and eventually reached Elephant Island.

A child falls from a frozen cliff. At the last minute, Big bear jumps and catches him in his huge paw. The boy started to tremble so big bear walked away. However, the young boy decided to follow. Will they learn to trust each other? Suddenly, the bear senses a storm is coming. What will they do?

## Timeline of Shackleton



**Food chains:**



**Habitats:**



Shackleton vocabulary:

**Rations** - having a limited amount of food or supplies for each person.

**Depot** – a place where supplies are stored.

**Compass** - a compass is an instrument that you use for finding directions.

**Capsize** - a boat turns upside down in the water.

**Frost bite** – when parts of the body gets damaged due to being very cold.

**Blizzard** – a very heavy snowstorm with strong winds.

**Endurance** – the name of Shackleton’s ship that got stuck in the ice.

Science vocabulary:

**Food chains** - a series of organisms each dependent on the next as a source of food.

**Habitat** -the natural home or environment of an animal, plant, or other organism.

**Adaptations** - an adaptation is a special skill which helps an animal to survive and do everything it needs to do.

**Organism** – is any living thing.